



COMMERCIAL REAL ESTATE BROKERAGE

PROPERTY MANAGEMENT

ACCOUNTING SERVICES



Route 125, Barrington, NH Stonehill Professional Building

OFFICE SPACE FOR LEASE

Office suites for lease in newly constructed first class facility in Barrington, NH. Flexible floor plans available with suites ranging in size from 787± sf to 5,790± sf. The property is conveniently located on Route 125 close to Route 4, Route 9 & the Spaulding Turnpike, just minutes from the Seacoast, Rochester, Dover & Somersworth. Suites may be combined to accommodate the larger tenant. Plenty of parking on site and handicap accessible.

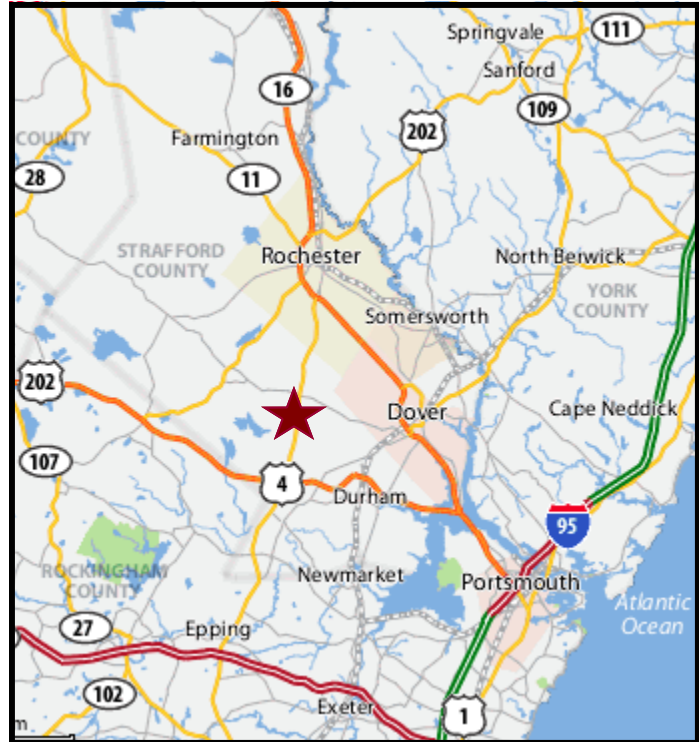
WINSOR BROOK PROPERTY ADVISORS, DOVER, NH

603.750.7501 tel

603.750.7502 fax

www.WinsorBrook.com

Property Address:	430 Route 125 Barrington, NH	
Building Size:	5,790± SF	
Available Suites	Suite 1	892± SF
	Suite 2	811± SF
	Suite 3	805± SF
	Suite 4	787± SF
	Suite 5	897± SF
	Suite 6	811± SF
Heat & AC:	Propane/FHA/Central AC	
Utilities:	Private Well & Septic	
Parking:	Four per thousand	
Elevator:	Yes/Handicap Accessible	
Tenant Fit-Up:	Landlord will provide one handicap restroom and one private office per suite. Tenant will be responsible for any additional fit-up.	
Asking Price:	\$1,000.00/mth/plus utilities Per Suite	

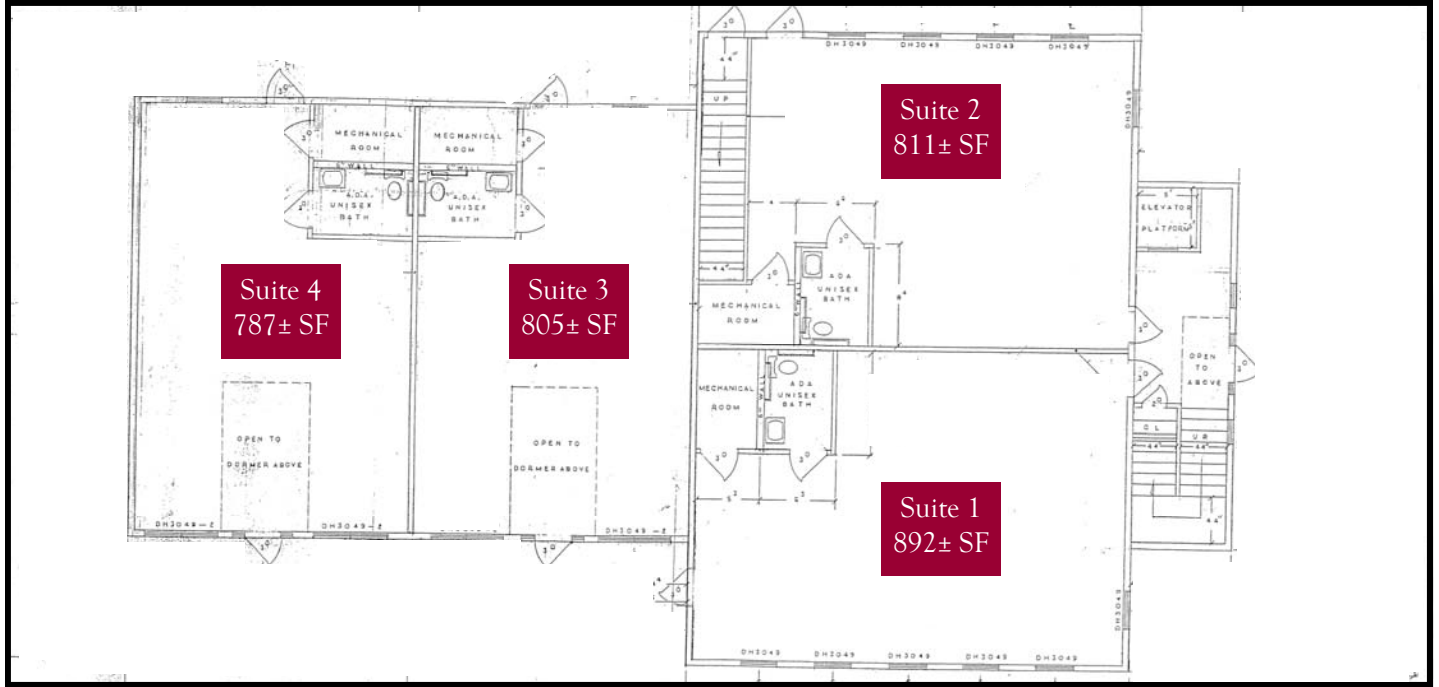


**FOR MORE INFORMATION
PLEASE CONTACT:**

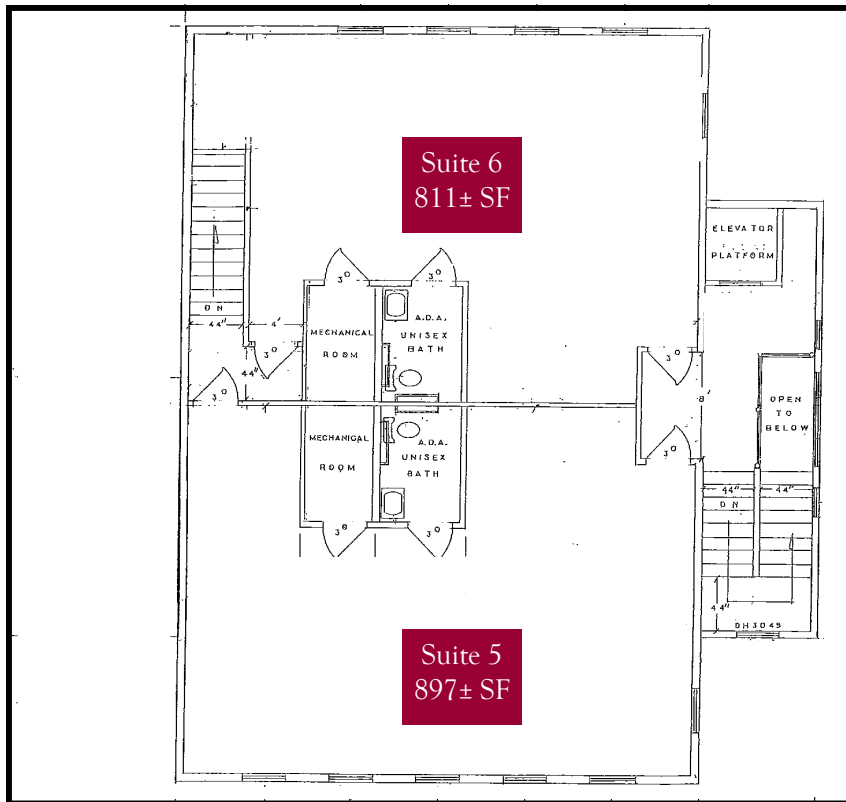
Doreen Rainville (603) 767-5670
 Jason Garland (603) 231-1193
 Cochecho Falls Millworks
 100 Main Street, Suite 100
 Dover, NH 03820
 603.750.7501 tel
 603.750.7502 fax

www.WinsorBrook.com





First Floor



Second Floor